

A Path Forward

US 6 CLIFTON PUBLIC MEETING

WELCOME

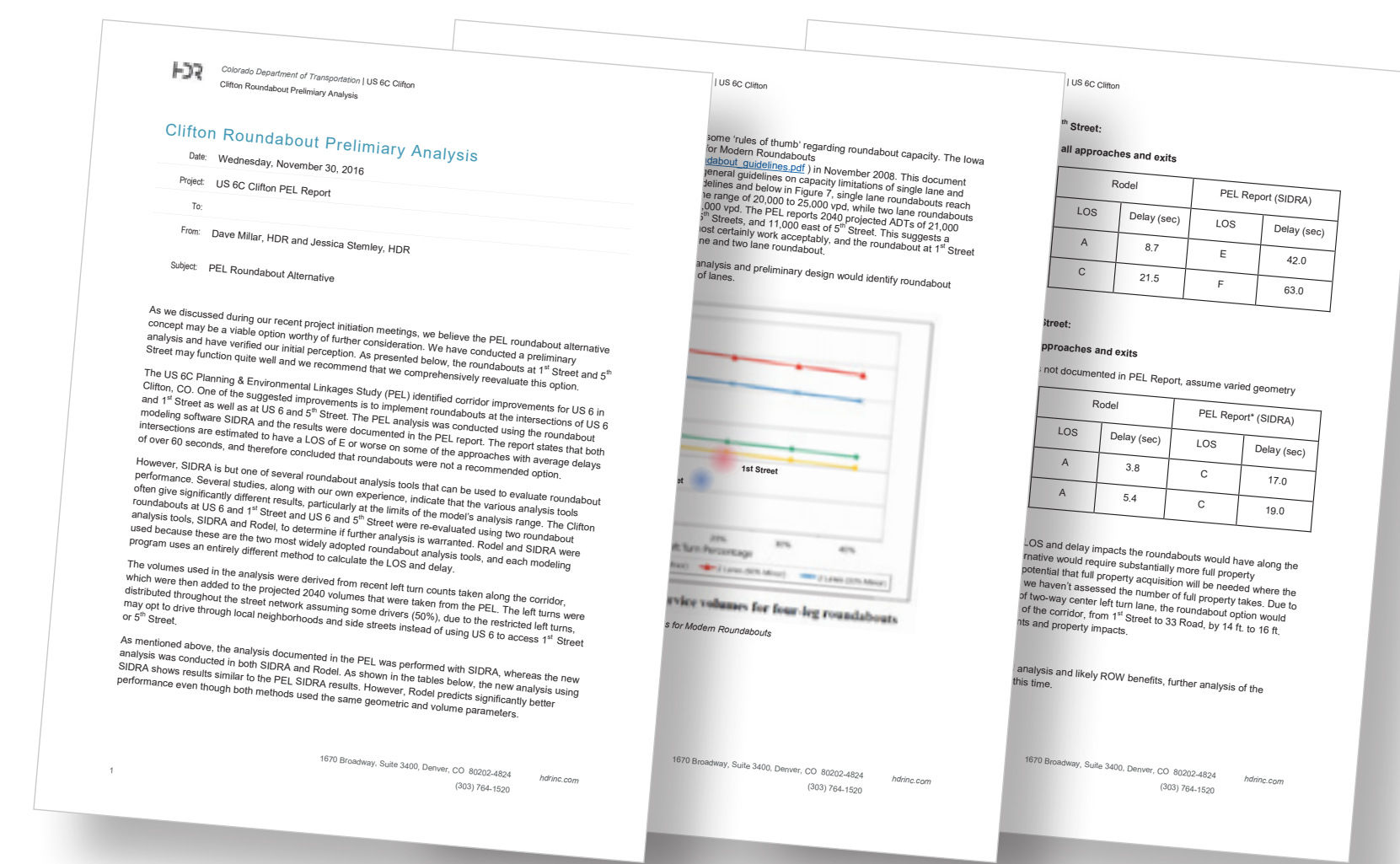
APRIL 20, 2022



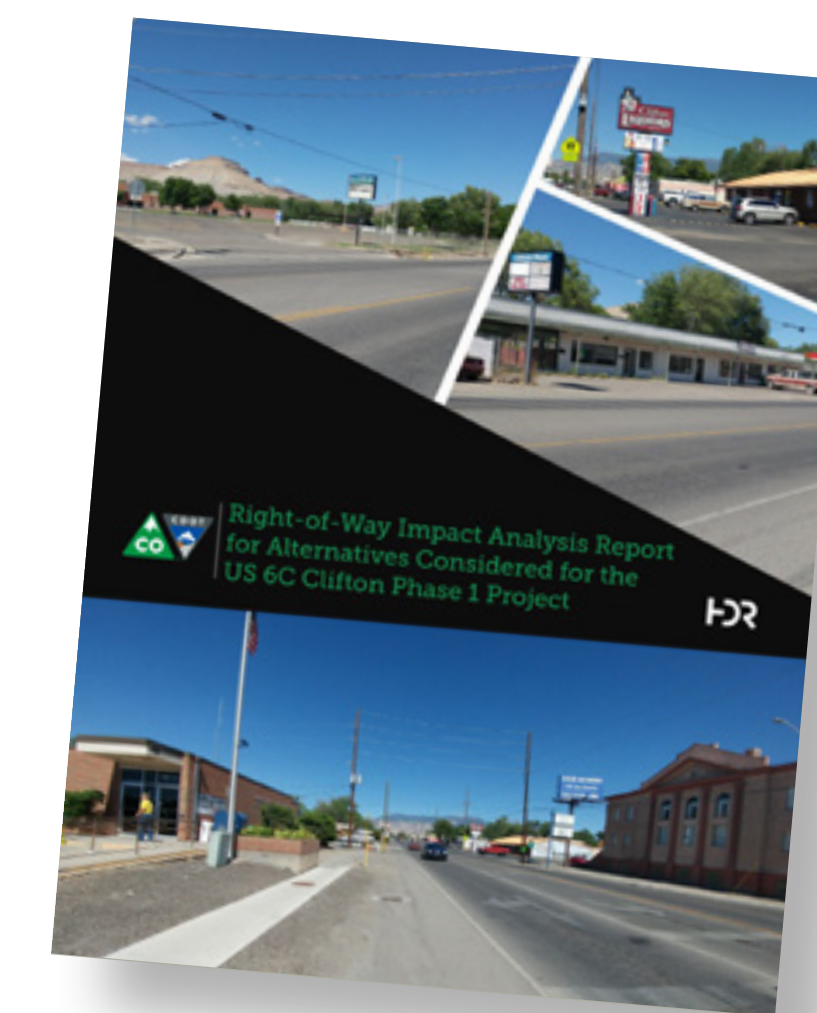
COLORADO
Department of Transportation

HOW DID WE GET HERE?

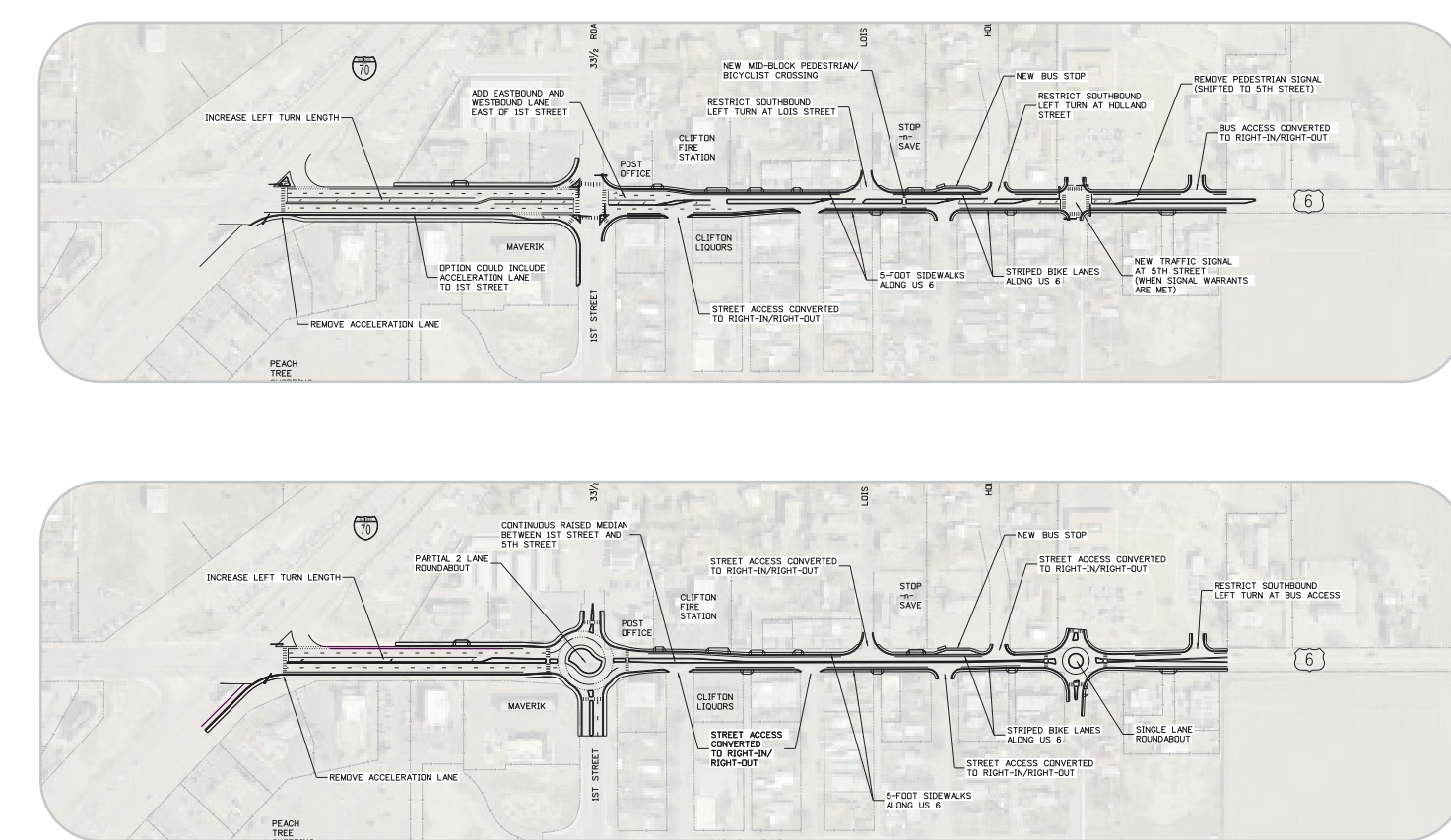
WORK THAT HAS OCCURRED SINCE COMPLETION OF THE PEL STUDY:



A Traffic Operations and Capacity Analysis was conducted



A Right-of-Way Impacts Analysis was completed



The PEL Recommended Alternatives were re-screened
The intersection design options – based on the PEL Recommended Alternative – were screened before being presented to the community in October 2021 for factors including but not limited to:

+ Traffic Operations

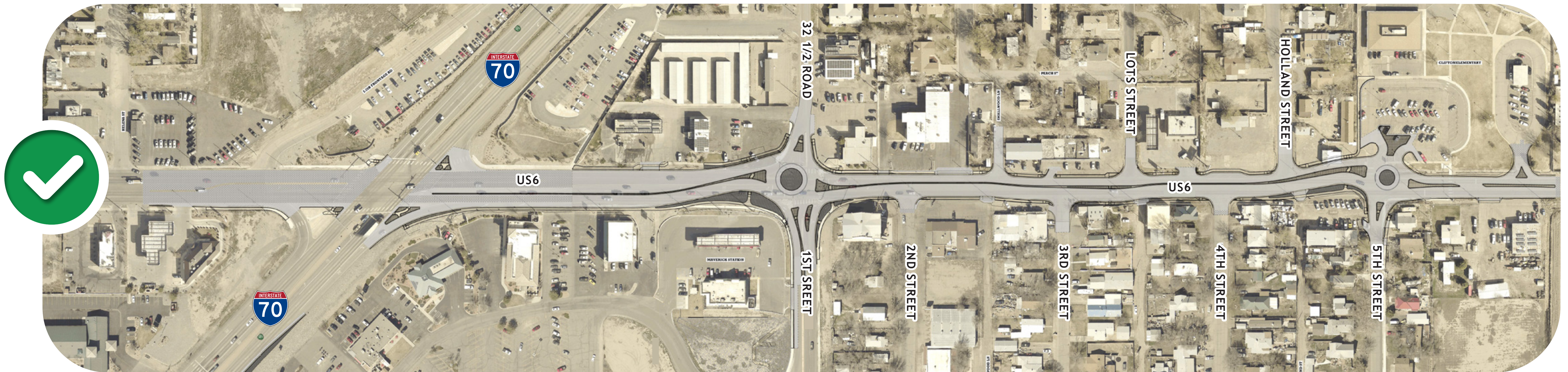
+ Safety Improvements

+ Right-of-Way Impacts

PROJECT AREA

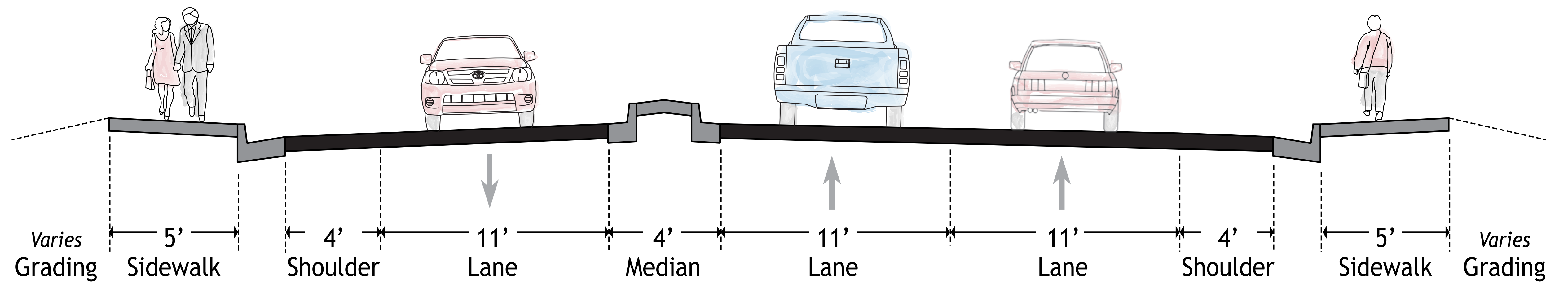


FINAL ROADWAY DESIGN

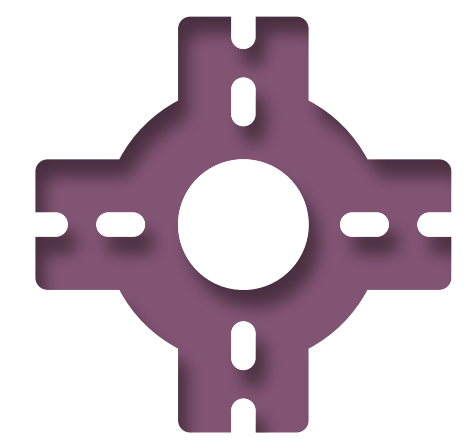


Example Cross Section

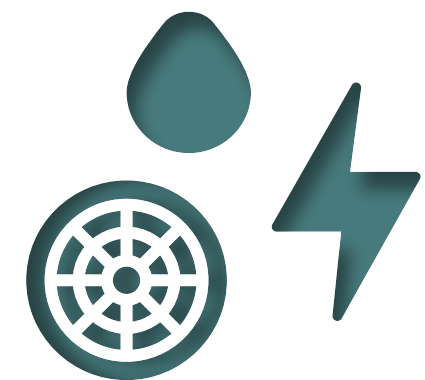
Between 1st Street & 5th Street



PROJECT BENEFITS



Roundabouts at 1st and 5th Streets to make intersections safer



New utility infrastructure throughout project



New storm drain system



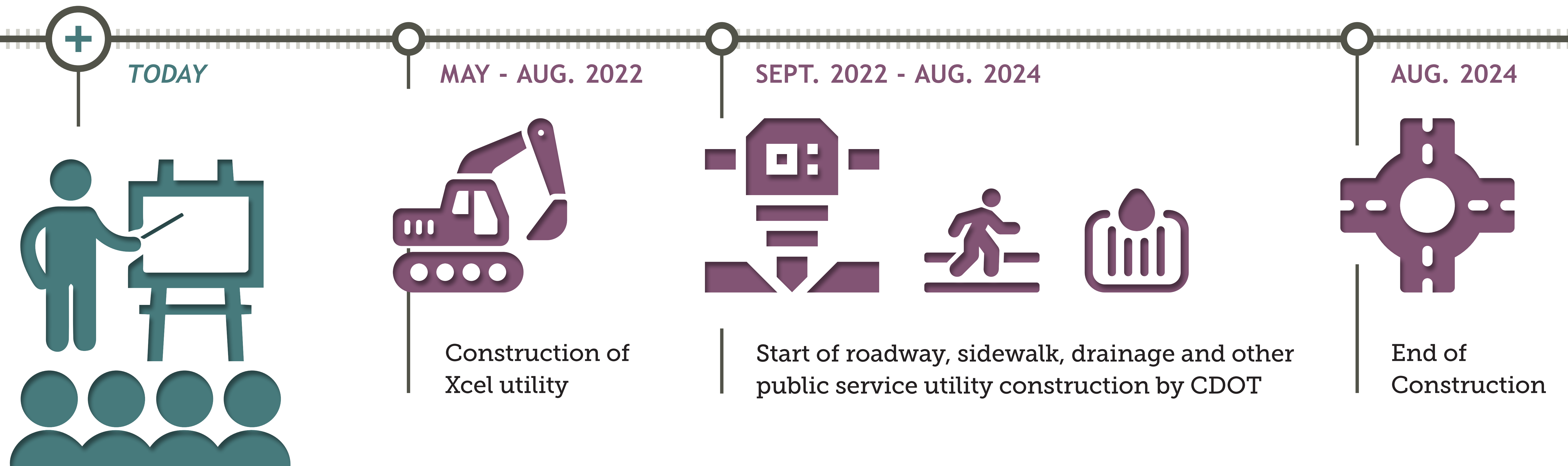
Controlled access to businesses



Safety benefits with new sidewalks and lighting

WHAT'S NEXT?

US 6 CLIFTON TIMELINE



April 20th Public Open House

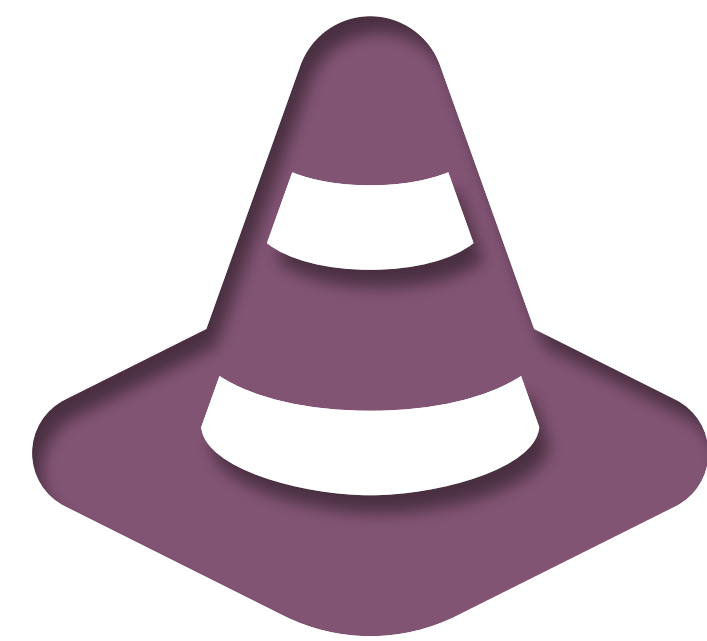
WHAT TO EXPECT

We understand construction is tough on our neighbors and drivers, which is why we're doing everything we can to minimize impacts and keep you informed.

ACTIVITIES YOU MAY ENCOUNTER DURING US 6 CONSTRUCTION



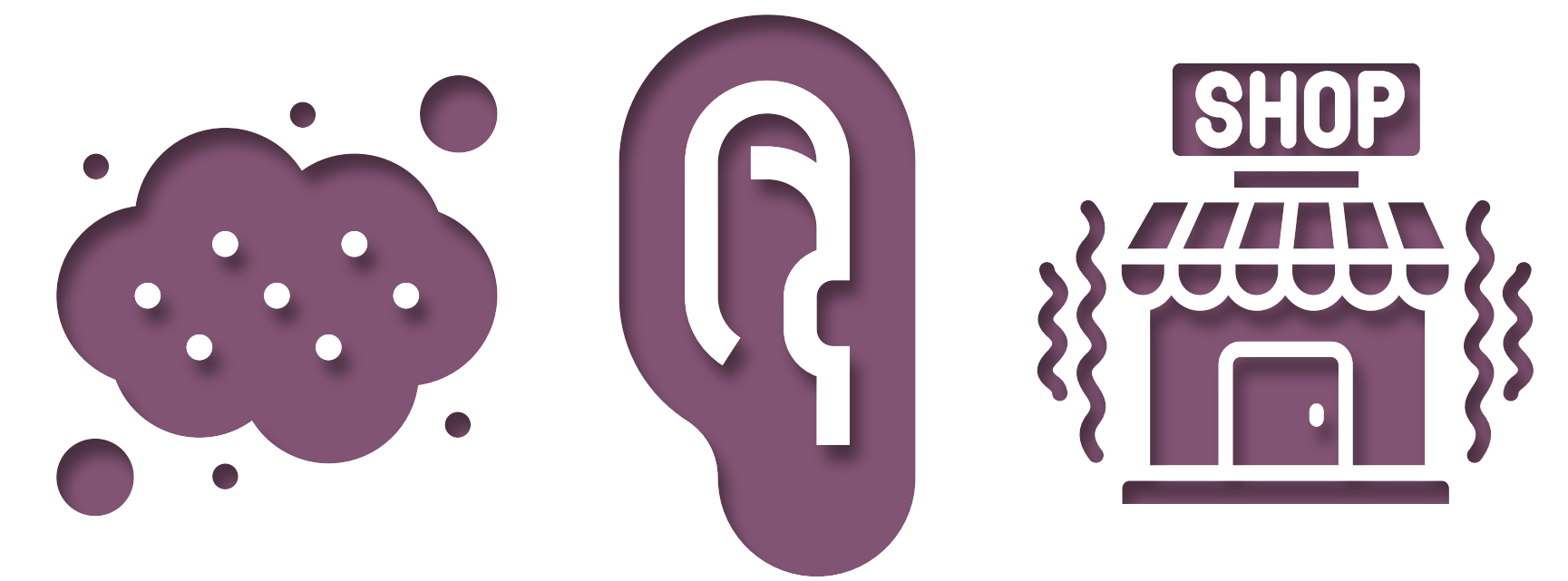
Slow Driving
Conditions



Construction
Materials



Heavy
Machinery



Dust, Noise and Vibrations
Near the Work Area

THANK YOU FOR YOUR PATIENCE

Our approach to the project includes keeping US 6 open to traffic, minimizing lane closures as much as possible, and scheduling work during daytime hours

ALTERNATIVE ROUTE

US6 WILL REMAIN OPEN DURING CONSTRUCTION

A recommended alternate route to help avoid the primary work area is to take 32 Road to Mesa Ave, then E 1/2 Road to 33 Road.





Learn more, ask questions, and share your feedback
codot.gov/projects/us-6-clifton-improvements

THANK YOU
FOR JOINING US



COLORADO
Department of Transportation